



May 2017

M&D Achieves Elite OSHA SHARP Award Certification

M&D Mechanical Contractors, Inc. has joined the elite ranks of the construction industry in safety by achieving the OSHA Safety & Health Achievement Recognition Program (SHARP). According to OSHA's website, "the program recognizes small business employers who have used OSHA's on-site consulting program services and operate an exemplary injury and illness prevention program."

Candidates for SHARP certification must undergo a rigorous comprehensive consultation from OSHA and maintain a company culture of exemplary injury and illness prevention programs. This prominent certification, held currently by only four companies in Alabama, is open only to small businesses with 250 or fewer onsite employees.



Eddie Evans, Safety Officer

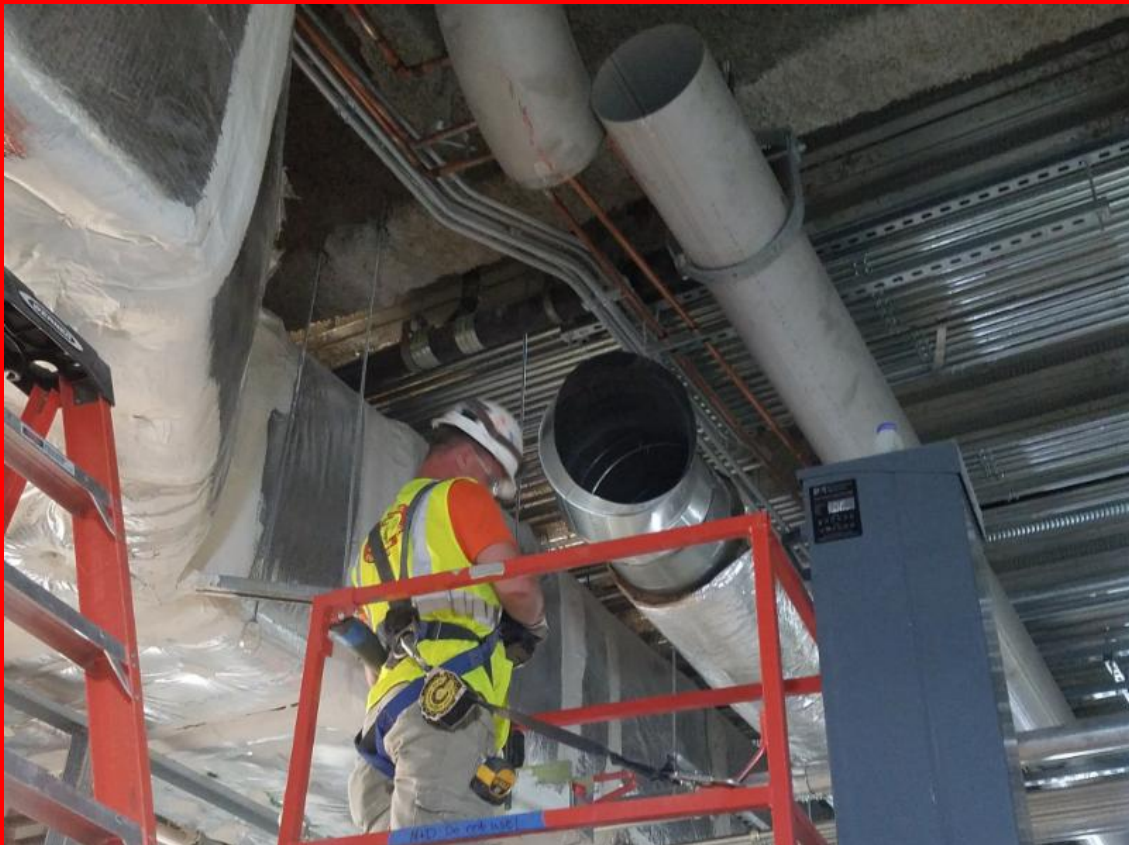


At the 2016 Excellence in Construction Awards hosted by Associated Builders and Contractors of North Alabama, Eddie Evans was selected as the Safety Professional of the Year. Eddie has chaired ABC's safety committee for the last five years. During this time, he has spearheaded the push to train hundreds of local employees from

member companies in safety training classes, such as OSHA 10 and 30 hour, excavation, fall protection, scaffolding, and defensive driving. Eddie has also been an exceptional resource for other local safety professionals, always available and helpful. He has led a major culture change at M&D Mechanical, which has resulted in a highly commendable safety record and a positive, all-inclusive safety program. Eddie also initiated and spear-headed the ambitious goal of achieving SHARP recognition from OSHA. This process took about 19 months to complete. The final result was that M&D Mechanical was accepted to the SHARP ranks at the end of 2016. Eddie enjoys the full support of a very engaged management staff, and he still found time to pose for pictures for a national advertising campaign for a local fall protection supplier.

Madison Hospital

M&D is working with Madison Hospital on some exciting new upgrades to their facilities, in order to provide a better service to their patients. Part of this upgrade is the renovation and relocation to an existing MRI, as well as adding a second MRI machine. We will also be adding a nuclear medicine area. This project will take place in two phases allowing the current MRI to stay in operation until the new MRI is functional. Once the new MRI is functional, the existing MRI will be relocated and the nuclear medicine area renovated. To accomplish this, a large amount of duct, as well as piping systems will have to be modified and added. Overall, there will be two new MRI chillers installed on the roof to provide cooling water to the equipment, new exhaust fans, computer room units and condenser, as well as medical gas piping modifications. New restrooms and work spaces will also be constructed during this renovation. This will be challenging as all hospital systems must be kept operational with minimal interruption in those areas





April was National Welding Month!

We are grateful for the 12 welders who work at M&D!
In honor of National Welding Month, we would like to highlight three of our skilled welders: James Day, Chad Smith, and Craig Bradford



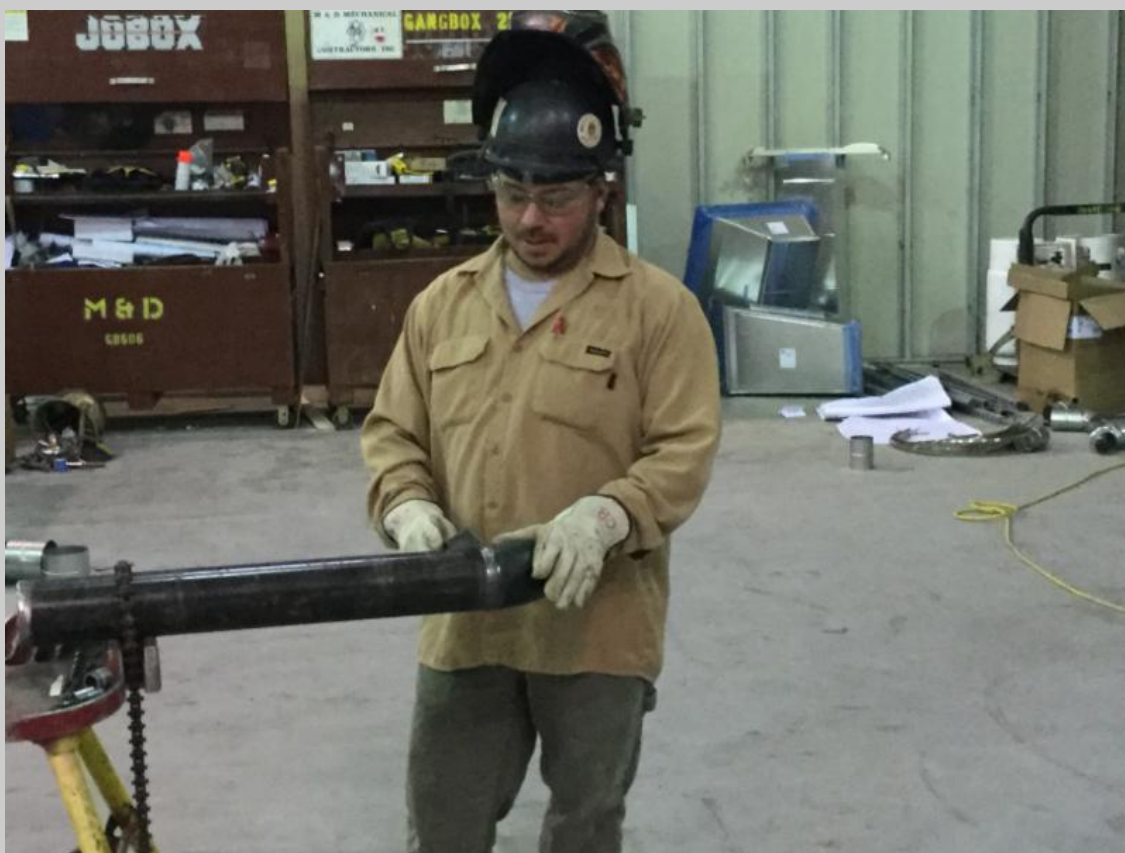
James Day

James Day has been a valuable part of the team since 1988. Since then, he has become M&D Mechanical Contractor's first welding instructor for our apprenticeship program and still mentors new welders in the company. His advice: "You have to want to weld, because it isn't easy. Keep improving and have a lot of pride in what you are doing. It is like making art. Concentrate and make it look good."



Chad Smith

Chad has been with M&D as a welder since the Fall of 2008. His advice: "If you want to be a welder, be the best at it and take pride in your craftsmanship"



Craig Bradford

Craig has been with M&D as a welder since the Spring of 2010. His advice: "Make every weld as if it was going to be an x-ray weld with no exceptions, this ensures the highest standards for quality."